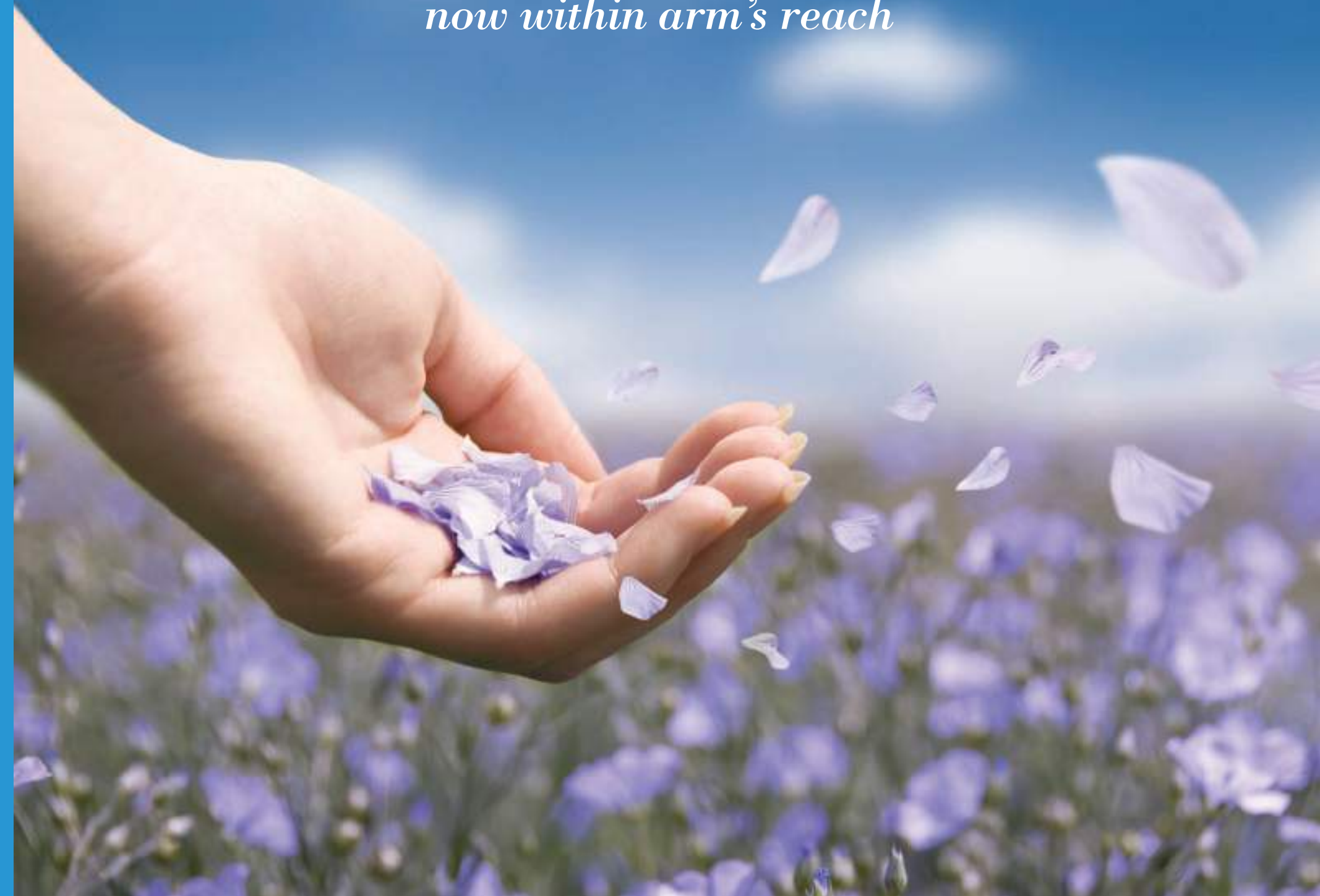




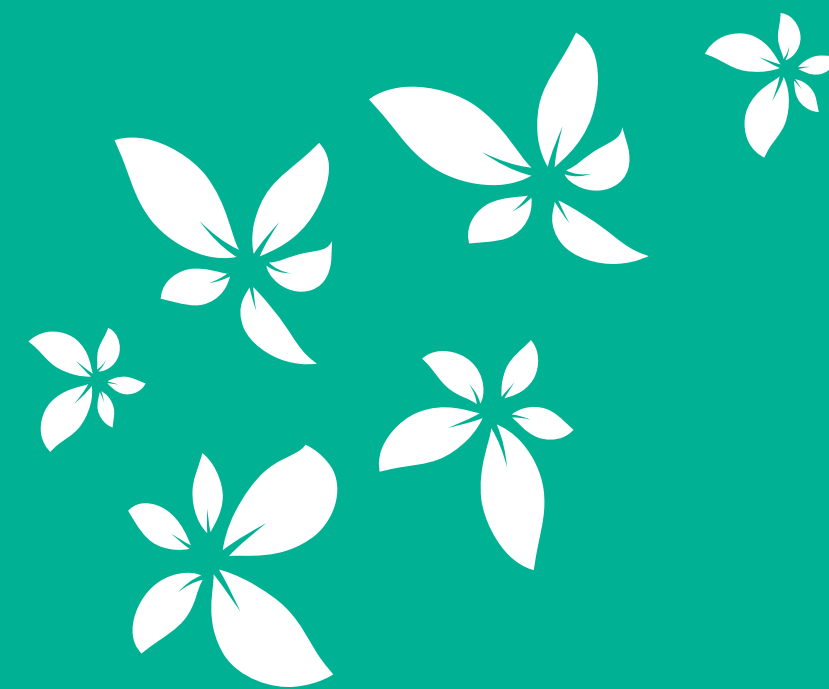
*A perpetually blissful lifestyle
now within arm's reach*



BAASHYAAM CONSTRUCTIONS PVT. LTD.
No. 11, Gopalakrishnan Street, T.Nagar, Chennai - 600 017
Ph: 044 4290 2345, Fax 044 4290 2344
Email: info@bashyamgroup.com / www.bashyamgroup.com



Disclaimer: The brochure is purely conceptual and not a legal document, the company reserves the right to change, modify any or all the contents herein as its discretions, without prior notice.



*Architecture that draws liberal inspiration from foreign lands
Homes that remind you of yesteryears spacious bungalows
Liberal pristine glass embellishing that mirrors your every desire
Green foliage that transport you to lush green forests
Sublime neighbourhood that is very close to the hot action in the city
Well laid out ample parking space that does not spill into the streets and
More surprises than you can possibly ever wish for in today's scenario.*

*Imperial dreams
never got this close to reality*

Just **FOUR** *RESIDENTIAL APARTMENTS!*

✿ You heard it right. Just four super exclusive, posh homes that take centre stage on 2.76 Grounds of land in the heart of the city.

✿ Reside in one of the most touted localities in the city, with prime neighbourhoods for neighbours. Cocooned far from prying eyes, you will live in absolute privacy, which lets you own 3460 sq.ft of space all to yourself and your beloved family. Besides you will be the sole owner in each floor with no one else vying for attention.



✿ Homes crafted with style and substance. Italian marble flooring in living and dining rooms to exotic wooden finishes in bedrooms, complemented by well thought out anti skid tiles in kitchen and toilets. When it comes to embellishing doors teak has been the biggest inspiration. And as far as bathroom fittings go, it has been adorned with the finest brands to have graced the earth.

✿ Your homes will be punctuated with green trees and plants in every direction and there is a terrace garden to boot. This ensures you are always connected to nature.

✿ What's more to give you complete peace of mind to enjoy all the lush trappings there is a central security system in place.



Specs at a glance

Total No. of Units:
FOUR UNITS

Each floor:
ONE UNIT

Location:
**HANUMANTHA ROAD,
BALAJI NAGAR, ROYAPETTAH**

Flat Dimensions:
3460 Sq.ft.

Car Parking:
**2 COVERED CAR PARKS
PER UNIT**

A Small Drive away from

Essential Centres
Renowned Schools
Colleges
Hospitals and
Places of Worship

Shopping and entertainment hubs

Express Avenue Mall
City Centre Mall
Satyam Cinemas
Woodlands/Melody Theatre
Marina Beach



SPECIFICATIONS :

Structure	: RCC framed structure : Walls will be of cement blocks
Floor Finishers	: Living and Dining : Italian marble Bedrooms : Marble / Wooden Kitchen : Anti skid tile Toilet : Anti skid tile Common Area & Stairs : Granite
Wall Tile	: Toilet : Designer tile up to ceiling height Kitchen : Designer tile DADO for 2 feet height over counter Utility : Designer tile DADO
Doors	: Main Door : Teak wood door frame with 40 mm thick teak wood panel shutter polished on both sides and Biometric lock Bedroom Door : Teak wood door frame with 32 mm thick Modular door shutter polished on both sides Toilet Door : Teak wood frame with 30 mm thick one side teak veneer flush door
Windows & Ventilators	: UPVC windows double glazed (Fenesta or equivalent)
Plumbing	: CPVC concealed water line Master Bedroom Toilet : KOHLER / equivalent with single lever mixture with rain shower Other Bedroom Toilet : KOHLER / equivalent with single lever mixture with over head shower
Toughened Glass Enclosure	: For all shower areas
Sanitary Installations	: All Toilets : KOHLER / equivalent
Maids Toilet	: One EWC will be provided
Kitchen	: Black granite counter top Sink - Double bowl with drain board
Lift	: 8 Passenger lift (Schindler / Kone / equivalent)
Drive Way	: As per architect specification
Security System	: Central security system for all apartments
Power Backup	: To connect 1 light, 1 fan & AC in all bedrooms & adequate lights in common area and to operate motor pump, elevator and pressure pump
Electrical	: Concealed wiring with modular switches (Siemens or equivalent) 3 Phase electrical supply with MCB & RCCB Telephone point provision in living,dining and master bedroom Foot lamp provision for all bedrooms One A/C provision for all bedrooms and living & dining
Painting	: Internal Walls and Ceiling : Two coats of putty, one coat primer and two coats of emulsion paint
Other Facilities	: Solar water heater, Intercom





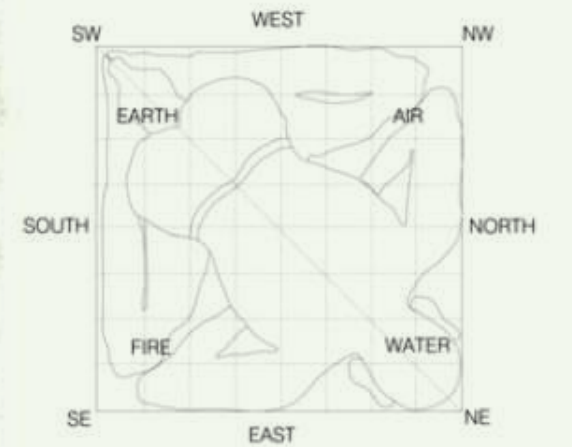
Floor Plan

First Floor

Second Floor

Third Floor

Saleable Area : 3460 Sq.ft.
(4 BHK)

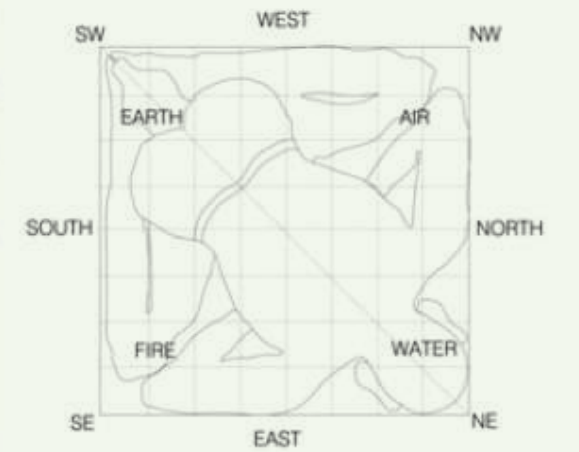




Floor Plan

Fourth Floor

Saleable Area : 3460 Sq.ft.
(4 BHK)



LIVING ROOM



EXECUTIVE LOUNGE



DINING



KITCHEN



MASTER BEDROOM



BEDROOM 2



BEDROOM 3



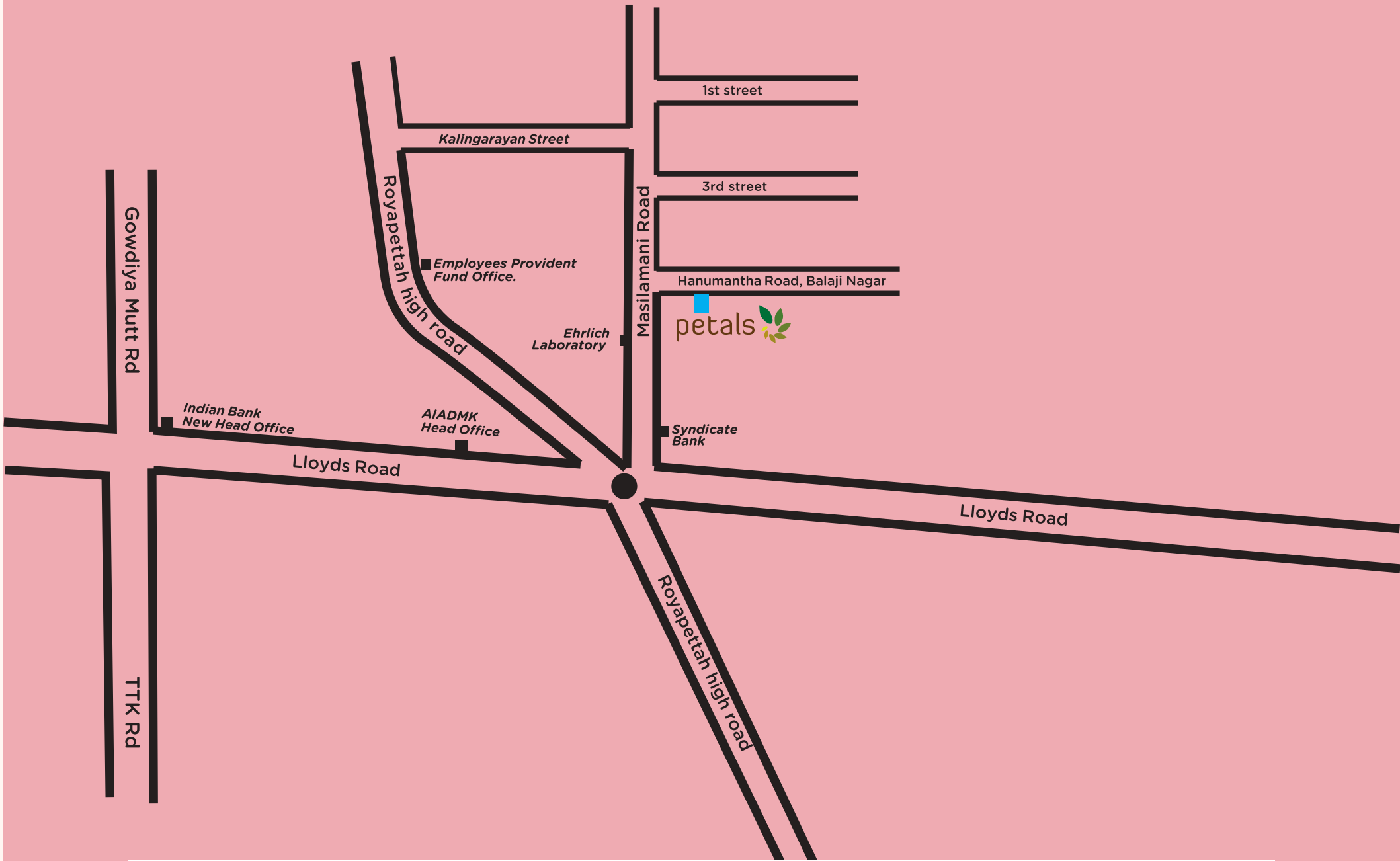
BEDROOM 4



TOILET



Baashyaam’s Petals Route Map



ASSOCIATE CONSULTANT

Architect & Interior Designer - **Multi Tech Associates**



LIVING ROOM





FROM THE REPUTED HOUSE OF



Three decade plus presence in the infrastructure vertical

Reputed for transparent business practices

The sound emphasis on quality has earned the continuous innovator tag

Obsession for timely delivery and a reputation for dependability

End-to-end capabilities right from inception to finish

(Right from modernisation in construction procedures, to excellent architectural innovations and service, to completion and handover of property)

Unflinching attention to customer and societal needs, with successful integration of diverse businesses like agriculture and hospitality

Thousands of satisfied customers

One-stop solution provider for making a prudent investment choice with the vision of “Improving lifestyles and Enhancing lives.”

OUR PROJECTS

ONGOING PROJECTS:

Le Chalet



Happy Windows



COMPLETED PROJECTS:

Jasmine Court



Baashyaam Navarathna

